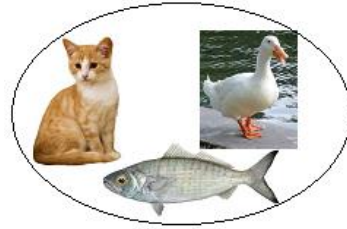
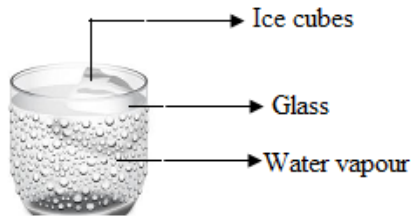

SCIENCE

1 Ducks, cat and fish can be grouped together because

- [A] They eat both plants and animals
- [B] They lay eggs
- [C] Of their similar outer body covering
- [D] They live in water



2 A glass with ice cubes is shown below. The formation of water droplets on the outer surface of the glass is due to



- [A] Evaporation
- [B] Transpiration
- [C] Condensation
- [D] Sublimation

3 Leaves help a plant to

- [A] Prepare its own food
- [B] Breathe
- [C] Absorb water from soil
- [D] Both (A) & (B)

4 Which of the following statements is TRUE in the case of animals?

- [A] All the animals lay eggs
- [B] All the animals give birth to young on
- [C] All the animals have backbones
- [D] All the animals depend on others for food

5 The brightest planet of the solar system

- [A] Mercury
- [B] Venus
- [C] Mars
- [D] Jupiter

6 Select the correct statement.

- [A] Roughages present in vegetables and fruits must be discarded,
- [B] Overcooking decreases the nutritive value of food
- [C] Preserved food has conditions suitable for growth of microbes
- [D] Growing children need more fats to build strong muscles

7 Doors and windows are oppositely placed in a house to

- [A] Allow better ventilation
- [B] Allow more sunlight
- [C] Allow people to see outside
- [D] None of these

-
- 8 Unscramble the letters given in the box to get the name of an animal. Now select the correct option regarding this animal.

AEWRTMORH

- [A] It sucks blood [B] It carries load for us
[C] It has a long sticky tongue [D] It swallows soil
-

- 9 The following figure shows the nest made by a bird. Identify the bird

- [A] Tailor bird
[B] Weaver bird
[C] Humming bird
[D] Owl



-
- 10 How does the leaf of a plant help the plant to survive?

- [A] Leaves take nutrients from the soil.
[B] Leaves produce the food.
[C] Leaves keep the plant from falling over.
[D] Leaves take in water from the soil
-

- 11 **X** is clothing worn in winters, while **Y** is clothing worn in summers. Select the correct option regarding it.

- [A] **X** can be **raincoat** while **Y** can be leather jacket
[B] **X** is made of cotton while **Y** is made of wool
[C] **X** is always made from natural fibres while **Y** is always made from man-made fibres
[D] None of these
-

- 12 Arun while driving sees the following road sign. What does it indicate?



- [A] Parking zone
[B] No Parking
[C] Pedestrian crossing
[D] No entry
-

- 13 A substance with no fixed shape but with fixed volume changes to a state with fixed shape and volume. This process is known as

- [A] Condensation [B] Evaporation
[C] Melting [D] Freezing
-

14 Arun suffers with constipation. Ajay has low immunity and falls ill frequently. Seema is shorter than other girls of her age. The given options have scrambled letter groups which contain the name of the nutrient the person needs more. Select the correct option.

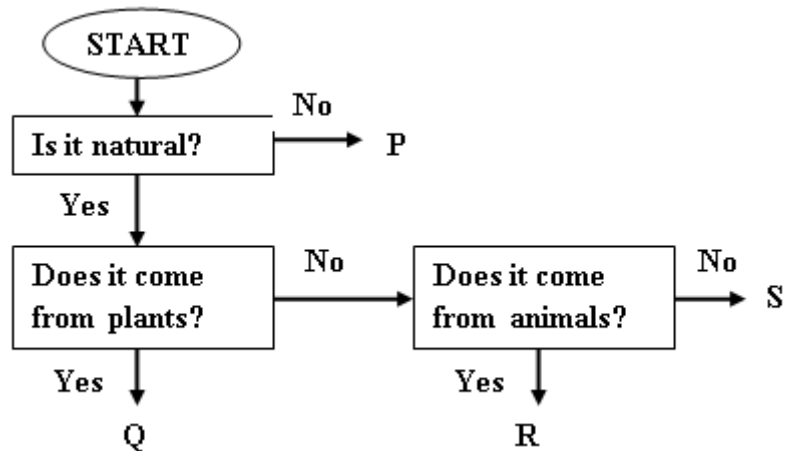
[A] Arun – OUGARHGE

[B] Ajay - AARHCBOYDRTE

[C] Seema - ATF

[D] All of these

15 Study the following flow chart carefully and answer the question that follows.



Which of the following letters represent silk and cotton respectively?

[A] P, Q

[B] Q, R

[C] Q, S

[D] R, S

16 Select the incorrect statement regarding rotation of the earth.

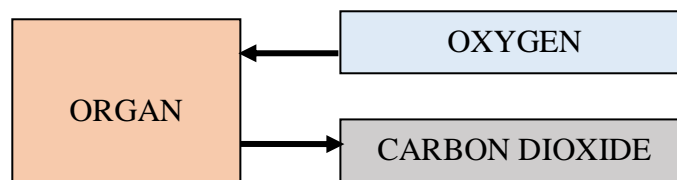
[A] The Earth rotates on its axis from West to East.

[B] Rotation of the Earth causes change of seasons.

[C] Rotation of the Earth causes day and night.

[D] The Earth completes one rotation in 24 hours

17 Observe the following flow chart carefully. It represents an organ in human body which takes in oxygen and gives out carbon dioxide.



Identify the organ

[A] Small intestine

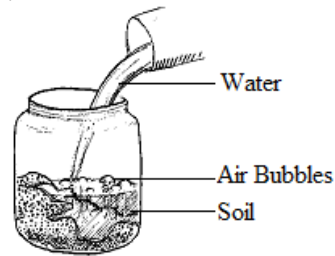
[B] Kidney

[C] Lungs

[D] Stomach

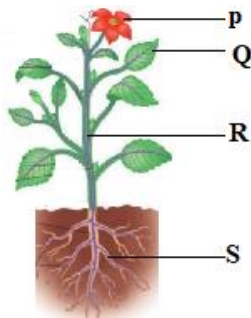
18 In the experiment shown below, water was poured into a container which has some soil. Air bubbles were seen rising. What does this show?

- [A] Soil contains moisture
- [B] Soil contain water
- [C] Soil contains air
- [D] None of these



19 Study the figure given here and answer the question given below.

Which of the following plant parts take part in absorption of water and minerals, and exchange of gases respectively?



- [A] P and Q
- [B] S and P
- [C] S and Q
- [D] R and P

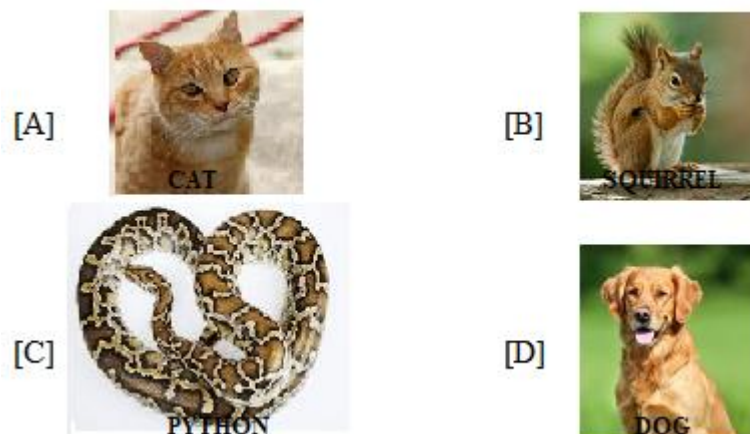
20 All living things can produce young one of their own kind. Which one of the following gives birth to babies?

- [A] Dolphin
- [B] Lizard
- [C] Eagle
- [D] Ostrich

21 Plants are autotrophs. They can prepare their own food. This process is called

- [A] Chlorophyll
- [B] Photosynthesis
- [C] Reproduction
- [D] Transpiration

22 Identify the animal which swallows its food whole.



23 Which of the following food item is rich source of carbohydrates?

[A]



[B]



[C]



[D]



24 What is the colour of pure water?

[A] White colour

[B] Blue colour

[C] Green colour

[D] Colourless

25 SELECT THE CORRECT STATEMENT.

[A] Water is not important to the earth

[B] Human beings cannot survive without water

[C] All non-living things need water

[D] All living things do not need water

26 In summer, water kept in an open plate for some hours in the sunlight, finally disappears. This is called

[A] Melting

[B] Freezing

[C] Evaporation

[D] Condensation

27 Which of the following disease is not caused by mosquitoes?

[A] Cholera

[B] Malaria

[C] Dengue

[D] Filaria

28 Which part of cotton plant is used to make cotton fibre?

[A] Leaves

[B] Stem

[C] Root

[D] Fruit

29 Find the odd one:

[A] Earth

[B] Moon

[C] Venus

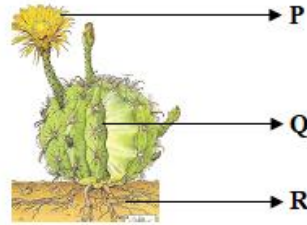
[D] Mars

30 SELECT THE INCORRECT STATEMENT.

- [A] Sweat is excreted by the skin
- [B] Lungs throw out oxygen and carbon dioxide
- [C] Undigested food is thrown out as faeces
- [D] Waste products are harmful to our body

31 The plant given below is a cactus. It is able to survive in harsh conditions like the desert. Which part of the cactus is mainly responsible for making food?

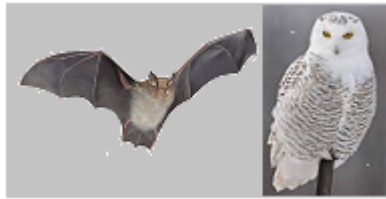
- [A] P only
- [B] Q only
- [C] R only
- [D] P and Q only



32 Butter, Cheese, curd are

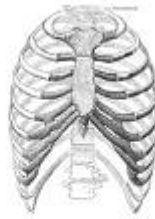
- [A] Plant product
- [B] Animal product
- [C] Both (a) & (b)
- [D] None of the above

33 Which of the following is the main difference between a bat and an owl?



- [A] Owl fly in the day, bats fly in the night
- [B] Bats feed on flowers, while owls eat insects
- [C] Bats have ears, owls do not
- [D] Owls have feathers, beak, but bats do not

34 Bones protect important internal organs of our body. Which one of the internal organ is protect



35 Identify the component of soil formed by decayed plants and animals.

- [A] Humus [B] Minerals
[C] Air [D] Water

36 Animals that can live both on land and water are called

- [A] Terrestrial animals [B] Aquatic animals
[C] Amphibians [D] None of these

37 OBSERVE THE FIGURES GIVEN BELOW AND SLECT THE CORRECT STATEMENT

- [A] A is heavier than B
[B] Both A & B have same volume
[C] Both A and B have same mass
[D] None of the above



2 Kg Cotton



2 Kg Stones

38 Which of the following best completes the given food chain?



- [A] Earthworm [B] Eagle
[C] Frog [D] Snake

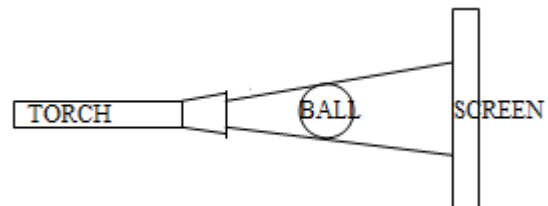
39 Cereals, pulses & nuts are

- [A] Plant products [B] Animal products
[C] Both (A) & (B) [D] None of these

40 Arjun shone a torch at a ball.. The shadow of the ball is projected onto a screen as shown below.

What could Arjun do to get a smaller shadow of the ball on the screen?

1. Move the ball closer to the screen
2. Move the torch further away from the ball
3. Move the screen further away from the ball



- [A] 1 Only [B] 3 Only
[C] 1 and 2 Only [D] 2 and 3 Only

LOGICAL REASONING

41 If the following pattern continues, what will be the 8th term in the pattern?

3C, 5E, 7G, 9I, 11K

[A] 13M

[B] 17 Q

[C] 13 Q

[D] 17 R

42 Observe the picture:



Which of the following is the correct representation of above picture?

[A] $6 \times 6 = 36$

[B] $6 + 4 = 10$

[C] $6 + 4 + 4 = 14$

[D] $6 \times 4 = 24$

43 Observe the value of the following:

E J O T Y

5 10 15 20 25

Based on the above sequence what will be the value of U?

[A] 21

[B] 22

[C] 22

[D] 23

44 If the following pattern continues, the next three terms are

2, 5, 9, 14, 20

[A] 26, 33, 41

[B] 30, 40, 50

[C] 26, 32, 38

[D] 27, 35, 44

45 Identify the relation and complete the blank place:

thick : thin = _____ : _____

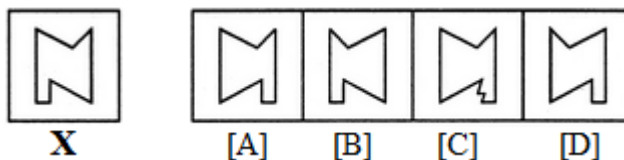
[A] tired – sleepy

[B] sad – happy

[C] warm – hot

[D] hungry – thirsty

46 Choose the correct mirror image of the given figure (X) from amongst the four alternatives.



X

[A]

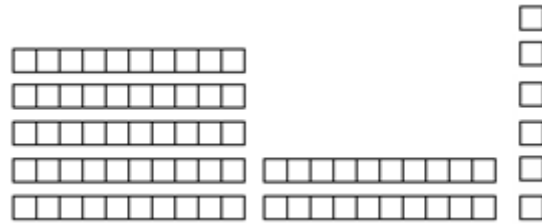
[B]

[C]

[D]

47 What number is shown by the blocks in the picture?

- [A] 75
- [B] 76
- [C] 85
- [D] 86

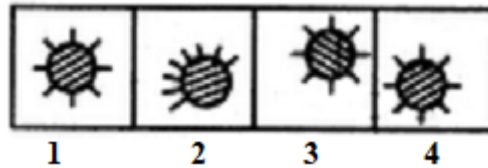


48 What is the next shape in the pattern?



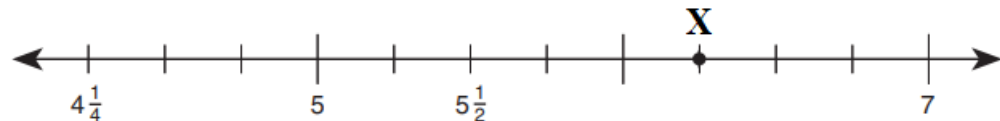
- [A]
- [B]
- [C]
- [D]

49 Choose the figure which is different from the rest.



- [A] 1
- [B] 2
- [C] 3
- [D] 4

50 Which number on the number line does point X best represent? Mark your answer.



- [A] $5\frac{3}{4}$
- [B] $6\frac{3}{4}$
- [C] 6
- [D] $6\frac{1}{4}$

SPACE FOR ROUGH WORK

SPACE FOR ROUGH WORK